

## State of Alabama

### Business Employment Dynamics: Third Quarter 2010

From July 2010 to September 2010, the number of gross **job gains** from opening and expanding private sector establishments was 88,544. This was 1,894 fewer jobs gained during the third quarter of 2010 than during the previous quarter, according to the Alabama Department of Industrial Relations, Labor Market Information Division, and the U.S. Bureau of Labor Statistics. The number of gross **job losses** from private sector closing and contracting establishments increased to 93,826 in the third quarter of 2010. This was 9,855 more jobs lost by establishments compared to second quarter 2010.

The change in the number of jobs over time is the net result of increases and decreases in employment that occur at all businesses in the economy. Business Employment Dynamics (BED) statistics track these changes in employment at private business units from the third month of one quarter to the third month of the next quarter.

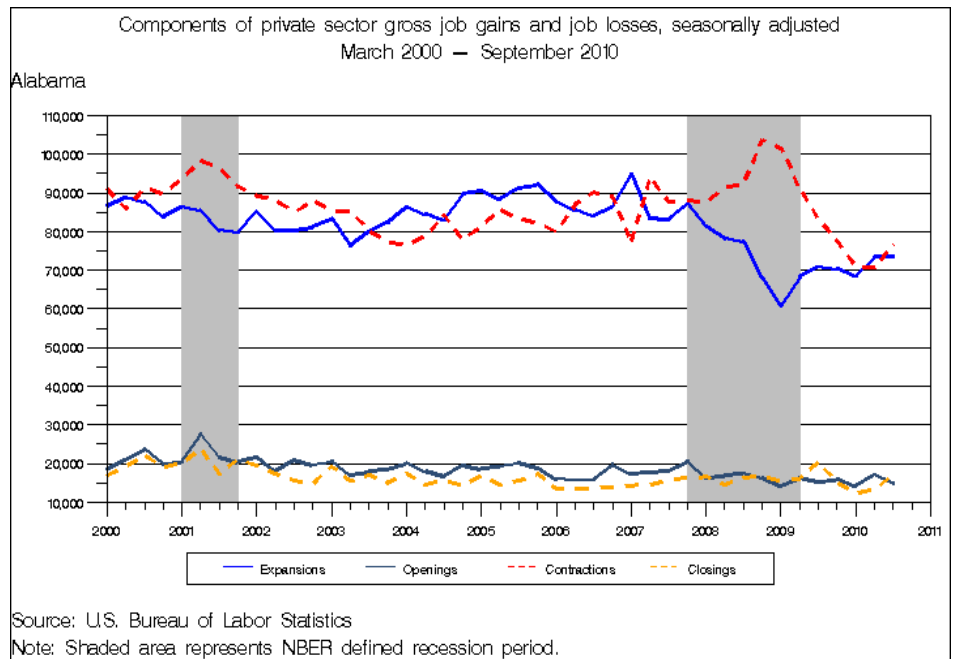
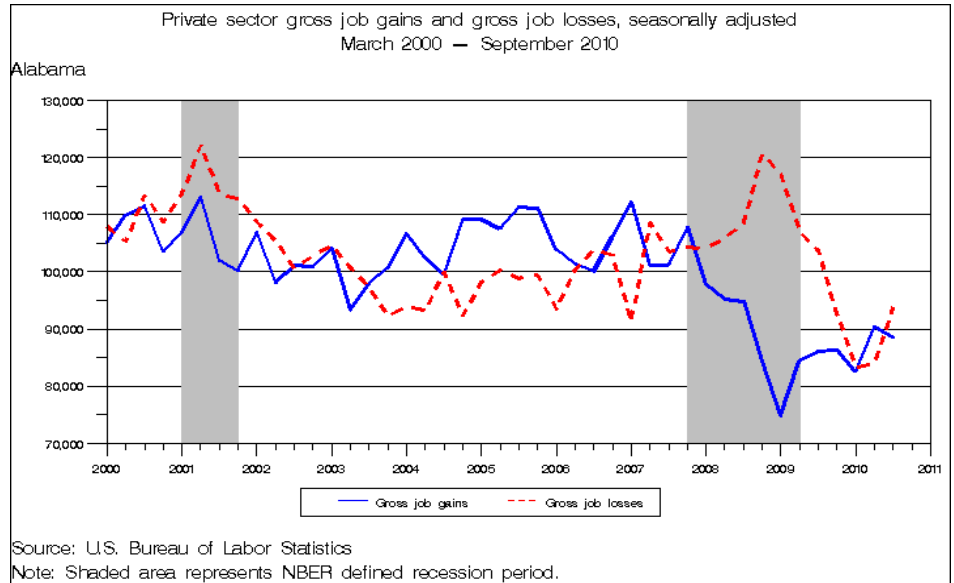
Gross job gains are the sum of increases in employment from expansions at existing units and the addition of new jobs at opening units. Gross job losses are the result of contractions in employment at existing units and the loss of jobs at closing units. The difference between the number of gross jobs gained and the number of gross jobs lost is the net change in employment. (See the Technical Note for more information.)

**Contracting** establishments lost 76,665 jobs in the third quarter of 2010. This number represented 6,010 more jobs lost than the previous quarter.

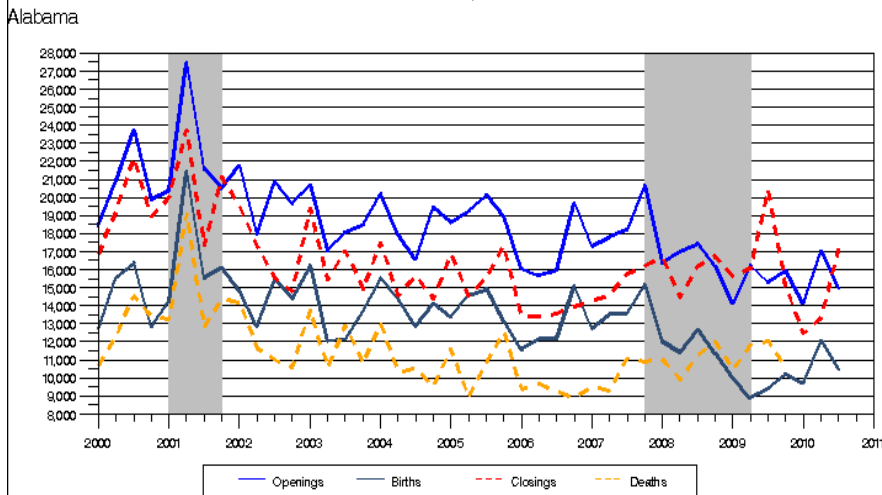
**Expanding** establishments gained 73,527 jobs, an increase of 116 jobs compared to the previous quarter.

**Closing** establishments lost 17,161 jobs from July 2010 to September 2010. This represented 3,845 more jobs lost since the prior quarter. **Opening** establishments gained 15,017 jobs during the third quarter of 2010. This represented 2,010 fewer jobs than the second quarter of 2010. (See Table 1)

The difference between the number of gross jobs gained and the number of gross jobs lost yielded a **net loss** of 5,282 jobs in the private sector for third quarter 2010.



Employment from private sector openings, closings, births and deaths, seasonally adjusted  
March 2000 – September 2010



Source: U.S. Bureau of Labor Statistics

Note: Shaded area represents NBER defined recession period.

**Gross job gains** represented 6.1 percent of private sector employment while gross job losses represented 6.5 percent of private sector employment.

**Establishment births**, a subset of the openings data (See Technical Note for more information), added 10,477 jobs at 2,023 new establishments in the third quarter of 2010. This number represented an employment decrease of 1,592 private sector at 39 fewer new establishments jobs compared to the previous quarter. Data for establishment deaths, a subset of the closings data, are now available for December 2009 with 10,531 jobs lost at 2,560 establishments.

Among eight states in the Southeast, Alabama ranked 6<sup>th</sup> in gross job gains for expanding and opening establishments with an increase of 88,544

jobs. Alabama ranked 4<sup>th</sup> in gross job losses with 93,826 lost in contracting and closing establishments. (See table B on the following page)

**Table A. Three-month private sector gross job gains and losses, seasonally adjusted**

Category	3 months ended				
	Sep 2009	Dec 2009	Mar 2010	Jun 2010	Sept 2010
	Levels				
Gross job gains.....	<b>86,122</b>	<b>86,379</b>	<b>82,695</b>	<b>90,438</b>	<b>88,544</b>
Expanding establishments	70,812	70,435	68,542	73,411	73,527
Opening establishments	15,310	15,944	14,153	17,027	15,017
Gross job losses.....	<b>103,661</b>	<b>92,544</b>	<b>83,327</b>	<b>83,971</b>	<b>93,826</b>
Contracting establishments	83,248	77,512	70,888	70,655	76,665
Closing establishments	20,413	15,032	12,439	13,316	17,161
Net employment change(1)	-17,539	-6,165	-632	6,467	-5,282
	Rates (percent)				
Gross job gains.....	6.0	6.0	5.8	6.3	6.1
Expanding establishments	4.9	4.9	4.8	5.1	5.1
Opening establishments	1.1	1.1	1.0	1.2	1.0
Gross job losses.....	7.1	6.4	5.8	5.8	6.5
Contracting establishments	5.7	5.4	4.9	4.9	5.3
Closing establishments	1.4	1.0	0.9	0.9	1.2
Net employment change(1)	-1.1	-0.4	0.0	0.5	-0.4

<sup>1</sup>The net employment change is the difference between total gross job gains and total gross job losses. See the Technical Note for further information.

From July 2010 to September 2010, Alabama ranked 5<sup>th</sup> among the southeastern states in gross job gains and ranked 3<sup>th</sup> in gross job losses as a percentage of total employment. Alabama's share of gross job gains account for 6.1 percent while gross job losses accounted for 6.5 percent. (See table C)

**Table B. Private sector gross job gains and losses by southeastern state, seasonally adjusted**

Gross Job Gains			Gross Job Losses		
Southeastern States	Rank	Sept 2010	Southeastern States	Rank	June 2010
Florida	1	404,527	Mississippi	1	57,549
Georgia	2	214,910	Kentucky	2	81,243
North Carolina	3	197,026	South Carolina	3	85,292
Tennessee	4	122,885	<b>Alabama</b>	<b>4</b>	<b>93,826</b>
South Carolina	5	91,029	Tennessee	5	125,005
<b>Alabama</b>	<b>6</b>	<b>88,544</b>	North Carolina	6	193,011
Kentucky	7	82,611	Georgia	7	201,871
Mississippi	8	55,347	Florida	8	419,712

Source: US Bureau of Labor Statistics

**Table C. Private sector gross job gains and losses as a percent of total employment by southeastern state, seasonally adjusted**

3 months ended					
Gross job gains as a percent of employment			Gross job losses as a percent of employment		
Southeastern States	Rank	Sept 2010	Southeastern States	Rank	June 2010
Georgia	1	7.0	Mississippi	1	6.9
Florida	2	6.7	Florida	1	6.9
Mississippi	3	6.6	Georgia	2	6.6
South Carolina	4	6.4	<b>Alabama</b>	<b>3</b>	<b>6.5</b>
North Carolina	4	6.4	North Carolina	4	6.2
<b>Alabama</b>	<b>5</b>	<b>6.1</b>	South Carolina	5	6.0
Kentucky	6	5.8	Kentucky	6	5.8
Tennessee	7	5.7	Tennessee	6	5.8

Source: US Bureau of Labor Statistics

## More Information

Additional information on gross job gains and gross job losses are available online at <http://www.bls.gov/bdm> . This information includes national data on the levels and rates of gross job gains and gross job losses by firm size, the not seasonally adjusted data and other seasonally adjusted time series not presented in this release, charts of gross job gains and gross job losses by industry and firm size, and frequently asked questions on firm-size data. Additional information about the Business Employment Dynamics data can be found in the Technical Note of this release or may be obtained by e-mailing [BDMinfo@bls.gov](mailto:BDMinfo@bls.gov).

## Technical Note

The Business Employment Dynamics (BED) data are a product of a federal-state cooperative program known as Quarterly Census of Employment and Wages (QCEW), or the ES-202 program. The BED data are compiled by the U.S. Bureau of Labor Statistics (BLS) from existing quarterly state unemployment insurance (UI) records. Most employers in the U.S. are required to file quarterly reports on the employment and wages of workers covered by UI laws, and to pay quarterly UI taxes. The quarterly UI reports are sent by the Alabama Department of Industrial Relations to BLS and form the basis of the Bureau's establishment universe sampling frame. These reports also are used to produce the quarterly QCEW data on total employment and wages and the longitudinal BED data on gross job gains and losses. Other important Bureau uses of the UI reports are in the Current Employment Statistics (CES) program. (See table below for differences between QCEW, CES, and BED.)

In the BED program, the quarterly UI records are linked across quarters to provide a longitudinal history for each establishment. The linkage process allows the tracking of net employment changes at the establishment level, which in turn allows the estimation of jobs gained at opening and expanding establishments and jobs lost at closing and contracting establishments.

## Differences between QCEW, BED, and CES employment measures

The Bureau publishes three different establishment-based employment measures for any given quarter. Each of these measures--QCEW, BED, and CES--makes use of the quarterly UI employment reports in producing data; however, each measure has a somewhat different universe coverage, estimation procedure, and publication product.

Differences in coverage and estimation methods can result in somewhat different measures of over-the-quarter employment change. It is important to understand program differences and the intended uses of the program products. (See table below.) Additional information on each program can be obtained from the program Web sites shown in the table on the following page.

## Summary of Major Differences between QCEW, BED, and CES Employment Measures

	QCEW	BED	CES
<b>Source</b>	--Count of UI administrative records submitted by 8.2 million employers nationally	--Count of longitudinally-linked UI administrative records submitted by 6.4 million private sector employers	--Sample survey: <b>400,000 employers nationally</b>
<b>Coverage</b>	--UI and UCFE coverage: all employers subject to state and federal UI Laws	--UI Coverage, excluding: government, private households, and establishments with zero employment	<b>Nonfarm wage and salary jobs:</b> --UI Coverage, excluding agriculture, private households, and self-employed --Other employment, including railroads, religious organizations, and other non-UI- covered jobs
<b>Publication frequency</b>	--Quarterly -7 months after the end of each quarter	--Quarterly -8 months after the end of each quarter	--Monthly -Usually first Friday of following month
<b>Use of UI file</b>	--Directly summarizes and publishes each new quarter of UI data	--Links each new UI quarter to longitudinal database and directly summarizes gross job gains and losses	--Uses UI file as a sampling frame and annually realigns (benchmarks) sample estimates to first quarter UI levels

<b>Principal products</b>	--Provides a quarterly and annual universe count of establishments, employment, and wages at the county, MSA, state, and national levels by detailed industry	--Provides quarterly employer dynamics data on establishment openings, closings, expansions, and contractions at the national level --Future expansions will include data at the state level by industry and size of establishment	--Provides current monthly estimates of employment, hours, and earnings at the MSA, state, and national level by industry
<b>Principal uses</b>	--Major uses include: -Detailed locality data -Periodic universe counts for benchmarking sample survey estimates -Sample frame for BLS establishment survey	--Major uses include: -Business cycle analysis -Analysis of employer dynamics underlying economic expansions and contraction by size of establishment	--Major uses include: -Principal national economic indicator -Official time series for employment change measures -Input into other major economic indicators
<b>Program websites</b>	-- <a href="http://www.bls.gov/cew/">www.bls.gov/cew/</a>	-- <a href="http://www.bls.gov/bdm/">www.bls.gov/bdm/</a>	-- <a href="http://www.bls.gov/ces/">www.bls.gov/ces/</a>

## Coverage

Employment and wage data for workers covered by state UI and Unemployment Compensation for Federal employees (UCFE) laws are compiled from quarterly contribution reports submitted to Alabama Department of Industrial Relations by employers. In addition to the quarterly contribution reports, employers who operate multiple establishments within a state complete a questionnaire, called the "Multiple Worksite Report," which provides detailed information on the location of their establishments. These reports are based on place of employment rather than place of residence. UI and UCFE coverage is broad and basically comparable from state to state.

Major exclusions from UI coverage are self-employed workers, religious organizations, most agricultural workers on small farms, all members of the Armed Forces, elected officials in most states, most employees of railroads, some domestic workers, most student workers at schools, and employees of certain small nonprofit organizations.

Gross job gains and gross job losses in this release are derived from longitudinal histories of over 107,429 private sector employer reports out of 110,026 total reports of employment and wages submitted by Alabama Department of Industrial Relations to BLS in the third quarter of 2010. Gross job gains and gross job losses data in this release do not report estimates for government employees or private households (NAICS 814110), and do not include establishments with zero employment over two quarters.

## Concepts and methodology

The Business Employment Dynamics data measure the net change in employment at the establishment level. These changes come about in one of four ways. A net increase in employment can come from either opening establishments or expanding establishments. A net decrease in employment can come from either closing establishments or contracting establishments. Gross job gains include the sum of all jobs added at either opening or expanding establishments. Gross job losses include the sum of all jobs lost in either closing or contracting establishments. The net change in employment is the difference between gross job gains and gross job losses.

The formal definitions of establishment-level employment changes are as follows:

**Openings.** These are either establishments with positive third month employment for the first time in the current quarter, with no links to the prior quarter, or with positive third month employment in the current quarter following zero employment in the previous quarter.

**Expansions.** These are establishments with positive employment in the third month in both the previous and current quarters, with a net increase in employment over this period.

**Closings.** These are either establishments with positive third month employment in the previous quarter, with no employment or zero employment reported in the current quarter.

**Contractions.** These are establishments with positive employment in the third month in both the previous and current quarters, with a net decrease in employment over this period.

**Births.** These are establishments that appear in the longitudinal database for the first time with positive employment in the third month of a quarter, or showed four consecutive quarters of zero employment in the third month followed by a quarter in which it shows positive employment in the third month.

**Deaths.** These are establishments that either drop out of the longitudinal database or an establishment that had positive employment in the third month of a given quarter followed by four consecutive quarters of showing zero employment in the third month.

All establishment-level employment changes are measured from the third month of each quarter. Not all establishments change their employment levels; these establishments count towards estimates of total employment, but not for levels of gross job gains and gross job losses.

Gross job gains and gross job losses are expressed as rates by dividing their levels by the average of employment in the current and previous quarters. This provides a symmetric growth rate. The rates are calculated for the components of gross job gains and gross job losses and then summed to form their respective totals. These rates can be added and subtracted just as their levels can. For instance, the difference between the gross job gains rate and the gross job losses rate is the net growth rate.

Although the data for establishment births and deaths are tabulated independently from the data for openings and closings, the concepts are not mutually exclusive. An establishment that is defined as a birth in a given quarter is necessarily an opening as well, and an establishment defined as a death in a quarter must also be a closing.

Since openings include seasonal, and other, re-openings and closings include temporary shutdowns, the not seasonally adjusted values for births and deaths must be less than those openings and closings. However, because some BED series do not have many re-openings or temporary shutdowns, as well as the fact that births and deaths are independently seasonally adjusted from openings and closings, there may be instances in which the seasonally adjusted value of the former is greater than the latter.

The linkage process matches establishments' unique Alabama Department of Industrial Relations identification (ADIR-ID) numbers. Between 95 to 97 percent of establishments identified as continuous from quarter to quarter are matched by ADIR-ID's. The rest are linked in one of three ways. The first method uses predecessor and successor information, identified by the states, which relates records with different ADIR-ID's across quarters. Predecessor and successor relations can come about for a variety of reasons, including a change in ownership, a firm restructuring, or a UI account restructuring. If a match cannot be attained in this manner, a probability-based match is used. This match attempts to identify two establishments with different ADIR-ID's as continuous. The match is based upon comparisons such as the same name, address, and phone number. Third, an analyst examines unmatched records individually and makes a possible match.

In order to ensure the highest possible quality of data, Alabama Department of Industrial Relations verifies with employers and updates, if necessary, the industry, location, and ownership classification of all establishments on a 3-year cycle. Changes in establishment classification codes resulting from the verification process are introduced with the data reported for the first quarter of the year. Changes resulting from improved employer reporting also are introduced in the first quarter.

## Seasonal adjustment

Over the course of a year, the levels of employment and the associated job flows undergo sharp fluctuations due to such seasonal events as changes in the weather, reduced or expanded production, harvests, major holidays, and the opening and closing of schools. The effect of such seasonal variation can be very large.

Because these seasonal events follow a more or less regular pattern each year, their influence can be eliminated by adjusting these statistics from quarter to quarter. These adjustments make non-seasonal developments, such as declines in economic activity, easier to recognize. For example, the large number of youths taking summer jobs is likely to obscure other changes that have taken place in June relative to March, making it difficult to determine if the level of economic activity has risen or declined. However, because the effect of student's finishing school in previous years is known, the statistics for the current year can be adjusted to allow for a comparable change. The adjusted figures provide a more useful tool with which to analyze changes in economic activity.

The employment data series for opening, expanding, closing, and contracting establishments are independently seasonally adjusted; net changes are calculated based on the difference between gross job gains and gross job losses. Similarly, the establishment counts data series for opening, expanding, closing, and contracting establishments are independently adjusted, and the net changes are calculated based on the difference between the number of opening and closing establishments. Additionally, establishment and employment levels are independently seasonally adjusted to calculate the seasonally adjusted rates. Concurrent seasonal adjustment is run using X-12 ARIMA.

The net over-the-quarter change derived by summing the BED component series will differ from the net employment change estimated from the seasonally adjusted total private employment series from the CES program. The intended use of BED statistics is to show the dynamic labor market changes that underlie the net employment change statistic. As such, data users interested particularly in the net employment change and not in the gross job flows underlying this change should refer to CES data for over-the-quarter net employment changes.

### **Reliability of the data**

Since the data series on Business Employment Dynamics are based on administrative rather than sample data, there are no issues related to sampling error. Nonsampling errors, however, still exist. Nonsampling errors can occur for many reasons, such as the employer submitting corrected employment data after the end of the quarter or typographical errors made by businesses when providing information. Such errors, however, are likely to be distributed randomly throughout the dataset.

Changes in administrative data sometimes create complications for the linkage process. This can result in overstating openings and closings while understating expansions and contractions. The BLS continues to refine methods for improving the linkage process to alleviate the effects of these complications.

### **Additional statistics and other information**

Several other programs within BLS produce closely related information. The QCEW program, also known as the ES-202 program, provides both quarterly and annual estimates of employment by state, county, and detailed industry. News releases on quarterly county employment and wages and average annual pay by state and industry are available upon request from the Division of Administrative Statistics and Labor Turnover, Bureau of Labor Statistics, U.S. Department of Labor, Washington, DC 20212; telephone 202-691-6567; (<http://www.bls.gov/cew/>); (e-mail: [CEWInfo@bls.gov](mailto:CEWInfo@bls.gov)).

The CES program produces monthly estimates of employment, its net change, and earnings by detailed industry. These estimates are part of the Employment Situation report put out monthly by BLS.

The Job Openings and Labor Turnover Survey (JOLTS) program provides monthly measures of job openings, as well as employee hires and separations.

Information in this release will be made available upon request. Voice phone: 334/353-8220.

**Table 1. Private sector gross job gains and job losses, seasonally adjusted**

			Gross Job Gains			Gross Job Losses		
Year	3 Months ended	Net Change	Total	Expanding Establishments	Opening Establishments	Total	Contracting Establishments	Closing Establishments
2000	March	-2,722	105,169	86,713	18,456	107,891	91,033	16,858
	June	4,634	109,870	88,932	20,938	105,236	85,956	19,280
	September	-1,912	111,520	87,797	23,723	113,432	91,246	22,186
	December	-5,111	103,596	83,717	19,879	108,707	89,757	18,950
2001	March	-6,809	106,848	86,443	20,405	113,657	93,664	19,993
	June	-9,171	112,940	85,494	27,446	122,111	98,334	23,777
	September	-11,581	102,037	80,448	21,589	113,618	96,327	17,291
	December	-12,439	100,292	79,771	20,521	112,731	91,582	21,149
2002	March	-1,909	106,831	85,087	21,744	108,740	89,295	19,445
	June	-7,246	98,151	80,152	17,999	105,397	88,130	17,267
	September	521	101,111	80,257	20,854	100,590	85,045	15,545
	December	-1,871	100,929	81,279	19,650	102,800	88,022	14,778
2003	March	-586	104,036	83,348	20,688	104,622	85,239	19,383
	June	-7,381	93,334	76,300	17,034	100,715	85,279	15,436
	September	629	97,931	79,840	18,091	97,302	80,240	17,062
	December	8,625	100,801	82,315	18,486	92,176	77,285	14,891
2004	March	12,737	106,635	86,442	20,193	93,898	76,419	17,479
	June	9,289	102,502	84,585	17,917	93,213	78,662	14,551
	September	-322	99,620	83,025	16,595	99,942	84,288	15,654
	December	16,823	109,121	89,674	19,447	92,298	77,933	14,365
2005	March	10,940	109,161	90,532	18,629	98,221	81,374	16,847
	June	7,412	107,658	88,408	19,250	100,246	85,730	14,516
	September	12,465	111,362	91,248	20,114	98,897	83,331	15,566
	December	11,766	111,213	92,290	18,923	99,447	82,153	17,294
2006	March	10,430	103,871	87,831	16,040	93,441	80,028	13,413
	June	1,027	101,373	85,660	15,713	100,346	86,914	13,432
	September	-3,713	100,114	84,144	15,970	103,827	90,272	13,555
	December	3,294	106,237	86,552	19,685	102,943	88,991	13,952
2007	March	20,869	112,192	94,875	17,317	91,323	77,059	14,264
	June	-7,407	101,173	83,370	17,803	108,580	94,001	14,579
	September	-2,221	101,315	83,124	18,191	103,536	87,743	15,793
	December	3,505	107,801	87,166	20,635	104,296	88,102	16,194
2008	March	-6,419	97,731	81,369	16,362	104,150	87,510	16,640
	June	-10,741	95,228	78,217	17,011	105,969	91,512	14,457
	September	-13,594	94,848	77,412	17,436	108,442	92,282	16,160
	December	-36,164	84,376	68,211	16,165	120,540	103,792	16,748
2009	March	-42,253	74,930	60,800	14,130	117,183	101,567	15,616
	June	-22,593	84,427	68,222	16,205	107,020	90,964	16,056
	September	-17,539	86,122	70,812	15,310	103,661	83,248	20,413
	December	-6,165	86,379	70,435	15,944	92,544	77,512	15,032
2010	March	-632	82,695	68,542	14,153	83,327	70,888	12,439
	June	6,467	90,438	73,411	17,027	83,971	70,655	13,316
	September	-5,282	88,544	73,527	15,017	93,826	76,665	17,161

(1) Net change is the difference between total gross job gains and total gross job losses.

Source: Alabama Department of Industrial Relations, Labor Market Information Division in cooperation with the US Bureau of Labor Statistics, Business Employment Dynamics Program.

**Table 2. Alabama: Private sector gross job gains and losses, as a percent of employment (1), seasonally adjusted**

Year	3 months ended	Net change(2)	Gross job gains			Gross job losses		
			Total	Expanding establishments	Opening establishments	Total	Contracting establishments	Closing establishments
2000	March	-0.2	6.8	5.6	1.2	7.0	5.9	1.1
	June	0.3	7.2	5.8	1.4	6.9	5.6	1.3
	September	-0.2	7.2	5.7	1.5	7.3	5.9	1.4
	December	-0.3	6.7	5.4	1.3	7.0	5.8	1.2
2001	March	-0.5	6.9	5.6	1.3	7.4	6.1	1.3
	June	-0.7	7.4	5.6	1.8	8.1	6.5	1.6
	September	-0.8	6.7	5.3	1.4	7.5	6.4	1.1
	December	-0.8	6.7	5.3	1.4	7.5	6.1	1.4
2002	March	-0.1	7.2	5.7	1.5	7.3	6.0	1.3
	June	-0.5	6.6	5.4	1.2	7.1	5.9	1.2
	September	0.1	6.8	5.4	1.4	6.7	5.7	1.0
	December	-0.1	6.8	5.5	1.3	6.9	5.9	1.0
2003	March	0.0	7.0	5.6	1.4	7.0	5.7	1.3
	June	-0.4	6.4	5.2	1.2	6.8	5.8	1.0
	September	0.0	6.6	5.4	1.2	6.6	5.4	1.2
	December	0.6	6.8	5.6	1.2	6.2	5.2	1.0
2004	March	0.9	7.2	5.8	1.4	6.3	5.1	1.2
	June	0.6	6.8	5.6	1.2	6.2	5.2	1.0
	September	0.0	6.6	5.5	1.1	6.6	5.6	1.0
	December	1.2	7.2	5.9	1.3	6.0	5.1	0.9
2005	March	0.7	7.1	5.9	1.2	6.4	5.3	1.1
	June	0.5	7.0	5.7	1.3	6.5	5.6	0.9
	September	0.8	7.2	5.9	1.3	6.4	5.4	1.0
	December	0.7	7.1	5.9	1.2	6.4	5.3	1.1
2006	March	0.6	6.6	5.6	1.0	6.0	5.1	0.9
	June	0.0	6.4	5.4	1.0	6.4	5.5	0.9
	September	-0.3	6.3	5.3	1.0	6.6	5.7	0.9
	December	0.2	6.7	5.5	1.2	6.5	5.6	0.9
2007	March	1.4	7.1	6.0	1.1	5.7	4.8	0.9
	June	-0.5	6.3	5.2	1.1	6.8	5.9	0.9
	September	-0.2	6.3	5.2	1.1	6.5	5.5	1.0
	December	0.3	6.8	5.5	1.3	6.5	5.5	1.0
2008	March	-0.4	6.1	5.1	1.0	6.5	5.5	1.0
	June	-0.7	6.0	4.9	1.1	6.7	5.8	0.9
	September	-0.9	6.0	4.9	1.1	6.9	5.9	1.0
	December	-2.4	5.4	4.4	1.0	7.8	6.7	1.1
2009	March	-2.8	4.9	4.0	0.9	7.7	6.7	1.0
	June	-1.6	5.7	4.6	1.1	7.3	6.2	1.1
	September	-1.1	6.0	4.9	1.1	7.1	5.7	1.4
	December	-0.4	6.0	4.9	1.1	6.4	5.4	1.0
2010	March	0.0	5.8	4.8	1.0	5.8	4.9	0.9
	June	0.5	6.3	5.1	1.2	5.8	4.9	0.9
	September	-0.4	6.1	5.1	1.0	6.5	5.3	1.2

(1) The rates measure gross job gains and gross job losses as a percentage of the average of the previous and current quarter employment levels.

(2) Net change is the difference between total gross job gains and total gross job losses.

Source: Alabama Department of Industrial Relations, Labor Market Information Division in cooperation with the US Bureau of Labor Statistics, Business Employment Dynamics Program.

**Table 3. Alabama: Number of private sector establishments by direction of employment change, seasonally adjusted**

Year	3 months ended	Net change(1)	Gross job gains			Gross job losses		
			Total	Expanding establishments	Opening establishments	Total	Contracting establishments	Closing establishments
2000	March	-68	26,118	22,267	3,851	26,828	22,909	3,919
	June	-634	26,071	22,317	3,754	27,257	22,869	4,388
	September	45	26,473	21,781	4,692	27,101	22,454	4,647
	December	-7	25,659	21,637	4,022	26,141	22,112	4,029
2001	March	-638	25,245	21,302	3,943	27,198	22,617	4,581
	June	-47	25,756	21,279	4,477	26,921	22,397	4,524
	September	323	24,883	20,610	4,273	26,941	22,991	3,950
	December	-223	24,620	20,878	3,742	26,390	22,425	3,965
2002	March	-301	25,124	21,455	3,669	25,868	21,898	3,970
	June	-278	25,060	21,188	3,872	26,405	22,255	4,150
	September	286	25,402	21,309	4,093	26,134	22,327	3,807
	December	297	25,104	21,256	3,848	26,251	22,700	3,551
2003	March	-145	25,272	21,396	3,876	26,253	22,232	4,021
	June	-214	24,436	20,986	3,450	25,819	22,155	3,664
	September	261	25,954	22,246	3,708	25,214	21,767	3,447
	December	310	26,127	22,163	3,964	25,241	21,587	3,654
2004	March	520	26,374	22,474	3,900	25,155	21,775	3,380
	June	281	25,983	22,288	3,695	25,899	22,485	3,414
	September	-197	25,899	22,219	3,680	26,272	22,395	3,877
	December	634	27,028	23,000	4,028	25,047	21,653	3,394
2005	March	292	26,983	22,904	4,079	26,256	22,469	3,787
	June	298	26,926	23,091	3,835	26,341	22,804	3,537
	September	291	27,347	23,285	4,062	26,430	22,659	3,771
	December	655	27,643	23,408	4,235	26,631	23,051	3,580
2006	March	364	28,595	24,667	3,928	25,576	22,012	3,564
	June	200	27,208	23,463	3,745	27,158	23,613	3,545
	September	126	26,963	23,190	3,773	27,486	23,839	3,647
	December	644	27,690	23,303	4,387	27,216	23,473	3,743
2007	March	342	28,482	24,346	4,136	26,388	22,594	3,794
	June	127	26,785	23,031	3,754	27,914	24,287	3,627
	September	-249	27,196	23,211	3,985	28,634	24,400	4,234
	December	458	27,337	22,992	4,345	27,686	23,799	3,887
2008	March	-272	26,349	22,549	3,800	28,009	23,937	4,072
	June	-540	25,597	21,822	3,775	29,481	25,166	4,315
	September	-362	26,083	22,118	3,965	28,856	24,529	4,327
	December	-721	23,781	19,990	3,791	30,509	25,997	4,512
2009	March	-1,153	22,473	18,945	3,528	30,240	25,559	4,681
	June	-902	22,986	19,508	3,478	28,400	24,020	4,380
	September	-876	23,084	19,662	3,422	27,172	22,874	4,298
	December	-50	23,548	19,613	3,935	26,164	22,179	3,985
2010	March	-517	23,116	19,682	3,434	25,304	21,353	3,951
	June	-719	23,802	20,449	3,303	25,246	21,224	4,022
	September	-468	23,940	20,398	3,542	25,178	21,168	4,010

(1) Net change is the difference between total gross job gains and total gross job losses.

Source: Alabama Department of Industrial Relations, Labor Market Information Division in cooperation with the US Bureau of Labor Statistics, Business Employment Dynamics Program.

**Table 4. Alabama: Private sector establishments by direction of employment change, as a percent of total establishments (1), seasonally adjusted**

Year	3 months ended	Net change(2)	Gross job gains			Gross job losses		
			Total	Expanding establishments	Opening establishments	Total	Contracting establishments	Closing establishments
2000	March	0.0	28.3	24.1	4.2	29.0	24.8	4.2
	June	-0.7	28.3	24.2	4.1	29.6	24.8	4.8
	September	0.0	28.8	23.7	5.1	29.5	24.4	5.1
	December	0.0	27.9	23.5	4.4	28.4	24.0	4.4
2001	March	-0.7	27.5	23.2	4.3	29.7	24.7	5.0
	June	-0.1	28.3	23.4	4.9	29.6	24.6	5.0
	September	0.4	27.3	22.6	4.7	29.5	25.2	4.3
	December	-0.2	26.9	22.8	4.1	28.8	24.5	4.3
2002	March	-0.4	27.5	23.5	4.0	28.4	24.0	4.4
	June	-0.3	27.4	23.2	4.2	28.9	24.4	4.5
	September	0.3	27.8	23.3	4.5	28.6	24.4	4.2
	December	0.3	27.4	23.2	4.2	28.6	24.7	3.9
2003	March	-0.2	27.5	23.3	4.2	28.6	24.2	4.4
	June	-0.3	26.4	22.7	3.7	28.0	24.0	4.0
	September	0.3	28.1	24.1	4.0	27.2	23.5	3.7
	December	0.4	28.2	23.9	4.3	27.2	23.3	3.9
2004	March	0.6	28.3	24.1	4.2	27.0	23.4	3.6
	June	0.3	27.6	23.7	3.9	27.5	23.9	3.6
	September	-0.2	27.5	23.6	3.9	27.9	23.8	4.1
	December	0.7	28.6	24.3	4.3	26.5	22.9	3.6
2005	March	0.3	28.4	24.1	4.3	27.6	23.6	4.0
	June	0.3	28.2	24.2	4.0	27.6	23.9	3.7
	September	0.3	28.5	24.3	4.2	27.5	23.6	3.9
	December	0.7	28.7	24.3	4.4	27.6	23.9	3.7
2006	March	0.3	29.4	25.4	4.0	26.3	22.6	3.7
	June	0.2	27.8	24.0	3.8	27.7	24.1	3.6
	September	0.1	27.4	23.6	3.8	28.0	24.3	3.7
	December	0.6	28.0	23.6	4.4	27.6	23.8	3.8
2007	March	0.4	28.7	24.5	4.2	26.6	22.8	3.8
	June	0.2	26.9	23.1	3.8	28.0	24.4	3.6
	September	-0.2	27.2	23.2	4.0	28.6	24.4	4.2
	December	0.4	27.3	23.0	4.3	27.7	23.8	3.9
2008	March	-0.3	26.3	22.5	3.8	27.9	23.8	4.1
	June	-0.5	25.6	21.8	3.8	29.4	25.1	4.3
	September	-0.3	26.1	22.1	4.0	28.8	24.5	4.3
	December	-0.7	23.9	20.1	3.8	30.6	26.1	4.5
2009	March	-1.1	22.8	19.2	3.6	30.6	25.9	4.7
	June	-0.9	23.6	20.0	3.6	29.1	24.6	4.5
	September	-0.9	23.8	20.3	3.5	28.0	23.6	4.4
	December	0.0	24.4	20.3	4.1	27.1	23.0	4.1
2010	March	-0.5	24.0	20.4	3.6	26.2	22.1	4.1
	June	-0.8	24.7	21.3	3.4	26.3	22.1	4.2
	September	-0.5	25.0	21.3	3.7	26.3	22.1	4.2

(1) The rates measure gross job gains and gross job losses as a percentage of the average of the previous and current quarter employment levels.

(2) Net change is the difference between total gross job gains and total gross job losses.

Source: Alabama Department of Industrial Relations, Labor Market Information Division in cooperation with the US Bureau of Labor Statistics, Business Employment Dynamics Program.

**Table 5. Alabama: Private sector establishment births and deaths, seasonally adjusted**

Year	3 months ended	Births (1)		Deaths (2)	
		Establishments	Employment	Establishments	Employment
2000	March	2,476	12,724	2,521	10,716
	June	2,535	15,564	2,521	12,300
	September	2,713	16,383	3,010	14,543
	December	2,444	12,848	2,571	13,422
2001	March	2,510	14,241	2,995	13,261
	June	2,985	21,442	3,311	19,117
	September	2,808	15,535	2,626	12,795
	December	2,442	16,096	2,613	14,383
2002	March	2,361	14,842	2,585	14,195
	June	2,545	12,885	2,626	11,649
	September	2,525	15,464	2,523	11,003
	December	2,486	14,419	2,385	10,565
2003	March	2,680	16,224	2,710	13,751
	June	2,301	12,058	2,403	10,580
	September	2,376	12,174	2,249	12,888
	December	2,687	13,704	2,445	10,790
2004	March	2,693	15,511	2,179	12,979
	June	2,612	14,378	2,220	10,332
	September	2,538	12,890	2,436	10,520
	December	2,530	14,117	2,089	9,525
2005	March	2,751	13,410	2,429	11,591
	June	2,643	14,559	2,175	8,942
	September	2,706	14,939	2,451	10,823
	December	2,714	13,134	2,304	12,544
2006	March	2,671	11,548	2,278	9,382
	June	2,643	12,155	2,397	9,661
	September	2,547	12,209	2,330	9,276
	December	2,930	15,062	2,360	8,879
2007	March	2,801	12,748	2,434	9,473
	June	2,591	13,540	2,274	9,306
	September	2,600	13,612	2,804	11,073
	December	2,767	15,173	2,497	10,871
2008	March	2,490	12,012	2,540	11,036
	June	2,414	11,442	2,927	9,898
	September	2,448	12,670	2,853	11,236
	December	2,127	11,363	3,028	12,017
2009	March	2,176	9,996	3,100	10,450
	June	1,971	8,908	3,049	11,819
	September	1,843	9,406	2,762	12,039
	December	2,110	10,228	2,560	10,531
2010	March	2,044	9,742	N/A	N/A
	June	2,062	12,069	N/A	N/A
	September	2,023	10,477		

(1) -Values for births are not available for the first three quarters of the time series by definition.

(2) Values for deaths are not available for the most recent three quarters by definition.

Source: Alabama Department of Industrial Relations, Labor Market Information Division in cooperation with the US Bureau of Labor Statistics, Business Employment Dynamics Program.

**Table 6. Alabama: Rates (1) of private sector establishment births and deaths, seasonally adjusted**

Year	3 months ended	Births (2)		Deaths (3)	
		Establishments	Employment	Establishments	Employment
2000	March	2.7	0.8	2.7	0.7
	June	2.7	1.0	2.8	0.8
	September	2.9	1.1	3.3	0.9
	December	2.7	0.8	2.8	0.9
2001	March	2.8	0.9	3.3	0.9
	June	3.3	1.4	3.7	1.3
	September	3.1	1.0	2.9	0.8
	December	2.7	1.1	2.9	1.0
2002	March	2.6	1.0	2.8	0.9
	June	2.8	0.9	2.9	0.8
	September	2.7	1.0	2.7	0.7
	December	2.7	1.0	2.6	0.7
2003	March	2.9	1.1	2.9	0.9
	June	2.5	0.8	2.6	0.7
	September	2.6	0.8	2.4	0.9
	December	2.9	0.9	2.6	0.7
2004	March	2.9	1.0	2.3	0.9
	June	2.8	0.9	2.4	0.7
	September	2.7	0.9	2.6	0.7
	December	2.7	0.9	2.2	0.6
2005	March	2.9	0.9	2.6	0.8
	June	2.8	0.9	2.3	0.6
	September	2.8	1.0	2.5	0.7
	December	2.8	0.8	2.4	0.8
2006	March	2.8	0.7	2.3	0.6
	June	2.7	0.8	2.4	0.6
	September	2.6	0.8	2.4	0.6
	December	3.0	1.0	2.4	0.6
2007	March	2.8	0.8	2.5	0.6
	June	2.6	0.8	2.3	0.6
	September	2.6	0.9	2.8	0.7
	December	2.8	1.0	2.5	0.7
2008	March	2.5	0.8	2.5	0.7
	June	2.4	0.7	2.9	0.6
	September	2.4	0.8	2.8	0.7
	December	2.2	0.7	3.0	0.8
2009	March	2.2	0.7	3.1	0.7
	June	2.0	0.6	3.1	0.8
	September	1.9	0.6	2.8	0.8
	December	2.2	0.7	2.6	0.7
2010	March	2.1	0.7	N/A	N/A
	June	2.1	0.8		
	September	2.1	0.7	N/A	N/A

(1) The rate measures births and deaths as a percentage of the average of the previous and current quarter employment levels or total numbers of establishments.

(2) Values for births are not available for the first three quarters of the time series by definition. Values for deaths are not available for the most recent three quarters by definition.

Source: Alabama Department of Industrial Relations, Labor Market Information Division in cooperation with the US Bureau of Labor Statistics, Business Employment Dynamics Program.